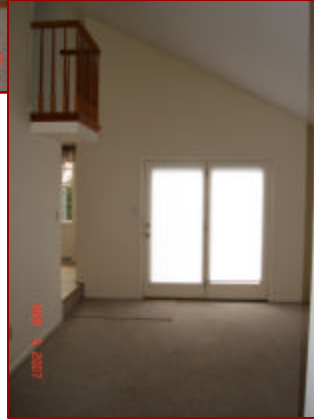


# 63 KIMBERWICK CIRCLE — GLENMOORE PA



The highly desired Kimberwick development in Glenmoore rarely has a 4 bedroom 2 1/2 bath home available. Once one is owned, people tend to hold on to them. You have a fantastic cul-de-sac opportunity to own a move in condition home, with new carpeting in the main level, new stove and all new paint in every room of the house. Enjoy a wonderful layout that is open and spacious yet practical and well conceived. The home features a large eat in kitchen, formal dining room with chair rail and crown molding, a spacious formal living room and a Family Room with cathedral ceilings, fireplace and overhead balcony landing from the second floor! The Family room also has French doors to a huge 20x30 deck overlooking the flat rear yard! Take a look at the over 45 pictures and video online and quickly set an appointment to see this bright and cheerful home, it won't last long at this price! I challenge you to find a better home for the money on the market today!

Don't wait! A home like this, at this price, will not last!

**\$295,000**



Thomas J. Linkins Jr., Realtor  
Cell: **484-571-7991**  
Fax: 866-297-2982

Email: [TomLinkins@Comcast.net](mailto:TomLinkins@Comcast.net)

Marasco Real Estate and  
Development  
1003 Caln-Meetinghouse Rd  
Coatesville, PA 19320  
610-383-6260



Go to: [www.WestBrandywineHomes.com](http://www.WestBrandywineHomes.com)

[www.WestBrandywineHomes.com](http://www.WestBrandywineHomes.com)

## FEATURES

**Oil Forced Hot Air**  
**Central Air**  
**200 Amp Service**  
**2 Car Garage w/ rear Outside entry**  
**Poured Concrete Basement**

**New Carpets LR/DR/Hall 2007**  
**New Stove 2007**  
**New Kitchen Sink Disposal 2005**  
**Water Heater 2003**  
**Roof Replaced Approx. 2001**



## PROPERTY HIGHLIGHTS

Area:	West Brandywine Township	Central Air:	Y
School District:	Coatesville	Heat Type:	Oil—Hot Air
Zoning:	Residential	Water Heater:	Electric
Lot Acres:	.57	Roof:	Shingled 2001
Style:	Colonial	Water:	Public
<b>Homes Sq Feet:</b>	<b>1936</b>	Sewer:	Publi
Bedrooms	4	Exterior:	Siding
Bathrooms	2 Full 1 Half	Year Built:	<b>1987</b>
Garage	Y	Patio/Deck	Yes
Cable TV wired	Y		

## ROOM DIMENSIONS (APPROX.)



Room	Size
Living Room	19x11
Dining Room	12x12
Kitchen	17x10
Family Room	17x11
Main Bedroom	15x12
Bedroom 2	12x10
Bedroom 3	12x8
Bedroom 4	12x9
Laundry Room	7x5
Deck	20x30
Basement	Full



All for only \$295,000!